



vLocPro

NEW Features & Accessories

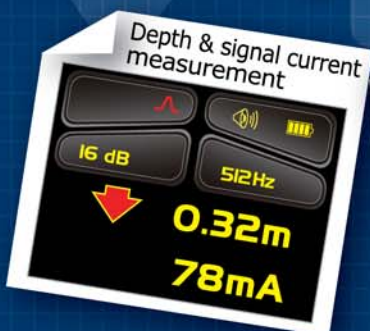


Main Display

New "STANDARD" Features... AVAILABLE NOW !!!

- New color display format
- Compass mode
- Continuous depth measurement (selectable)
- Progressive left/right indication
- Enhanced passive modes
- Variable pitch audio (selectable)
- Custom displays for accessories

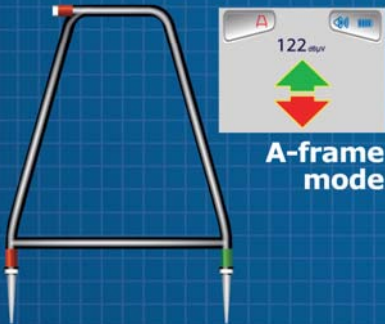
New Displays



Accessories

A-frame fault locator

- ▶ Standard A-frame



Remote antenna

- ▶ Use for cable identification particularly identifying heavy cables lying in a tray



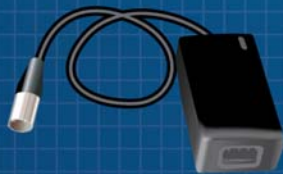
Transmitter 12V power lead

- ▶ 30ft (10m) lead to power (NOT charge) the transmitter from a vehicle



Live plug connector

- ▶ Apply the transmitter signal to the live domestic power socket and via the domestic wiring system onto the service cable and the supply cable in the street

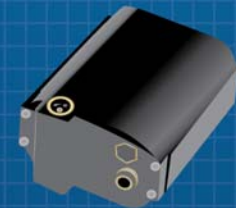


Receiver vehicle charging lead

- ▶ 12ft (4m) long lead to charge the receiver battery (or aux battery pack) while on the move



Auxillary rechargeable battery pack



Sonde

D18x80

- ▶ $\frac{3}{4}$ in (18mm) x 3.1in (80mm) long, 33kHz range 12ft (4m)

D64x186

- ▶ 2 $\frac{1}{2}$ in (64mm) x 7.3in (186mm) long, 33kHz range 20ft (7m)

D23F x 456

- ▶ 1in (23mm) x 18in (456mm) long
- ▶ Flexible (3 section sonde) will work in cast iron pipe
- ▶ D23F x 456 (512): frequency-512Hz, range 20ft (7m)
- ▶ D23F x 456 (640): frequency-640Hz, range 20ft (7m)
(512Hz for 60Hz environments, 640Hz for 50Hz environments)



Signal clamp

- ▶ Apply the transmitter signal to a specific cable
- ▶ 4in diameter (100mm)

